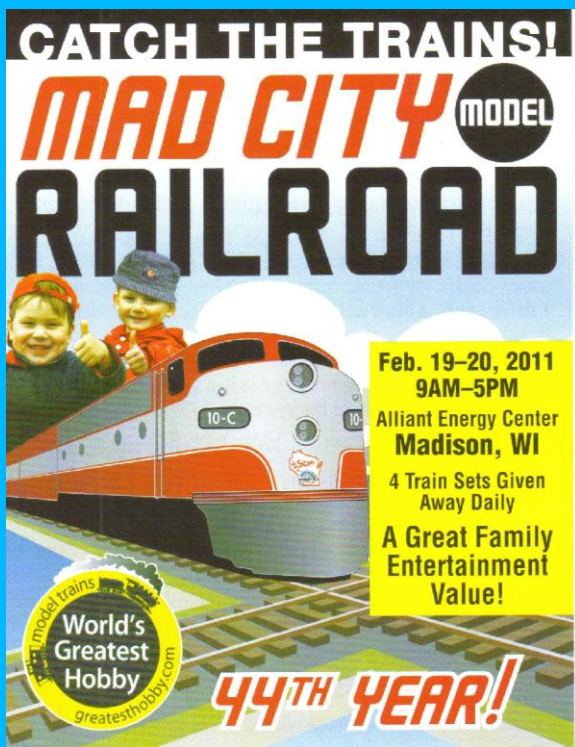


February 2011

[www.nmra-scwd.org](http://www.nmra-scwd.org)

Volume 42 No.6



## All Aboard Mad City!! Are you Ready to Rock?

Everything is falling in place for the 2011 edition of the Mad City Model Railroad and Sale. Art Dawson and the show staff have been working hard since last October to get this edition ready to run. Now, with the show just a couple of weeks away we are polishing up the engine, cleaning up the cars and aligning all the switches for another run towards a successful show. I personally enjoy watching the kids keeping mom and dad busy running after them

as they see one modular displays after another along with hands-on displays that draw their attention. The Wisconsin Garden Railway Society always has kids on the floor watching the G-scale trains running. It's fun to watch the big kids as well with their shopping lists in hand looking for bargains all over the Alliant Energy Center.

The South Central Wisconsin Division of the Midwest Region – NMRA welcomes one and all to our 44<sup>th</sup> Mad City Show. Come on in and join us for a fun weekend and break up your winter blahs with us.

Kids! Four train sets will be given away to our young modelers age 5 to 11 each day of the show. For more information, please visit our web site at [www.nmra-scwd.org](http://www.nmra-scwd.org).



Rail School 2011

Photo Charles Karpelenia

# Super's Report

by Paul Mangan, Division Superintendent

Is it circus? Not! Is it spring time? Definitely Not! Then it must be Mad City Train Show time. Yes indeed. Our Division Name Train is almost ready to depart the station. On February 19<sup>th</sup> and 20<sup>th</sup> the 2011 edition of our show will be the South Central Wisconsin Division's forty fourth continuous year for the Mad City Model Railroad Show and Sale. I want to thank the volunteers who have signed on already but there is still room for a few more. Don't get that left out feeling, sign on today! You can be a part of making this show another successful event. My contact info is in the Red Book. I know I can find a spot for you. The new SCWD lapel pins have arrived and the members who have received them say they are cool. How do you get one? All you need to do is sign up for two shifts at the train show and you get one. It's just a small way of saying thanks.

## Out on the Main

Rail School 2011 was very successful. Andy Potts once again did a wonderful job organizing the annual event held on January 9<sup>th</sup> at the Knights of Columbus Hall. It was fun to see the large contingent of fifty-nine members of the SCWD who set up to welcome the sixty-five people from the community into our house and show them just what the hobby is all about. I hope this leads to new members coming in to join us at our regular meetings and start down the road to model railroading. I still believe the old phrase that goes "Model Railroading Is Fun".

Just a reminder that April is not that far away and that means the spring elections for Board of Directors is coming. Serving the Division as a board member is very rewarding. Please give some serious thought to having your name stand for the election. If you have never served on the Board it is not that difficult. One Monday night a month of your time is all it takes. If you have served before there is no rule that says you can't do it again. Experience does count you know. Bob Wundrock is the elections chair and he would be glad to hear from you. His contact info is in the Red Book.

Next Regular Meet:

Feb. 6<sup>th</sup>, 1pm.

Knights of Columbus- Anton Dr.

### **Contests: Locomotives**

Master builder Motive Power

A. Steam locomotives

B. Diesel and gas locomotives

C. Electric-powered locomotives

Next BOD Meeting:

Feb. 14<sup>th</sup>, 7 p.m.

Fitchburg Fire Station.

Next Youth Group Meeting:

Feb. 20<sup>th</sup>,

Train Show, Madison

## In The Shops

The train show season is fast approaching. This is a great time of year to check out John Fisher's column on upcoming events. After we put our ticket booths away we then look into March for the La Crosse show and then the Rockford show. Then into April for our convention here and after Easter we wind up at the Green Bay Show. In the meantime we need to get a banquet date locked down. It's just a typical spring for our active division.

For our picnic in July we have an idea! We are thinking of having it up in Baraboo at a modeler's house that has two layouts. We can picnic there and then have a bus take us to see some of the out of town layouts that we never get to see after our meets here in Madison. I need to know about the interest level of the membership in doing this so when you see me at the meets, please let me know your thoughts.

## In The Station

On April 15<sup>th</sup> through 17<sup>th</sup>, 2011 the South Central Wisconsin Division will be hosting the Midwest Region Convention at the Madison Radisson Hotel on Madison's west side. I want to thank all who have volunteered to open their layouts for tours and to give clinics as well as helping out at the convention center. You can grab a signup form and participate in the convention. We have a wonderful weekend planned so come on and join in.

# Clinics Column

by Mike Vivion, Clinics Chair

We had a great turnout for the January Rail School. Hope everyone learned something useful from all the people who presented mini-clinics there. If you missed the meeting, you'll have to wait until next year. In the meantime, hope you'll make it to our February meeting.

Bob Wundrock, SCWD's newest MMR, will be presenting the first clinic titled: "*John Allen: His Modeling Through Photography.*" With a collection of mostly unpublished slides and photos, Bob will step through the formulation of John Allen's three Gorre & Daphetid layouts. Bob will also show how Allen took photos of his modeling to help improve the final look of his layouts. If you are new to model railroading and don't know who John Allen was, he was one of the most influential modelers of all time so be sure to attend. If you miss Bob's presentation at the February meet, he will repeat it twice at the MWR Badgerland Express convention in April.

Our second clinic will be a video. At press time, I have not made a final selection but I have several good ones to choose from. So I promise you it will be interesting to watch. Hope to see you all at the meeting.



## Feb. Layout Tours

by Phil Hottmann

As fate would have it Super Bowl Sunday coincides with our February 6<sup>th</sup> meeting and due to potential cold weather, finding layouts to tour has been difficult. As a result we are planning a new venue for the February 6<sup>th</sup> meeting. At this point I'm keeping it a surprise but, I hope you all enjoy the tour.

I am also working on filling the remainder of the year so if anyone is interested in opening their layout please contact me. My e-mail address and phone number are in the Red Book.



## CN Visits Madison Children's Museum

CN has partnered with the Madison Children's Museum to help promote both railroading and safety when around trains. In the photo above, Kevin Soucie, Director of Government Affairs for CN presents Ruth Shelly, Executive Director of the Children's Museum with the second part of a \$50,000 donation to the museum.

The SCWD Train Team was invited to be part of the ceremonies on January 4<sup>th</sup> 2011 at the Museum. The train performed wonderfully for the T.V. cameras and for the presentation. The layout includes scenes promoting safety at crossings for both pedestrians and vehicles alike. It was great to have the opportunity to talk with Kevin at the museum as we learned that CN operates on more track than any other railroad in Wisconsin.

The Museum is very grateful for this donation and we Train Team members are very happy to have been part of this effort to promote railroads and safety while at the same time promoting our hobby. Train Team members present for the ceremony were Bob Stone, John Haverberg, Mike Vivion, Charlie Karpelenia and Paul Mangan. Not present were Larry Enlow, Steve Lanphear and Joe Myers. Through all the hard work it has been a real pleasure working with the staff at the museum.

If you have not been to the museum yet I suggest you stop in and see for yourself what the hoopla is all about. Adults without children

are welcome to visit the museum at no charge to look around; just check in at the front desk to get a visitor badge. They are located at 100 N. Hamilton St. in Madison. You can visit them on the web at [MadisonChildrensMuseum.org](http://MadisonChildrensMuseum.org) as well. The staff gets kids involved in things other than video games and television shows. This is a giant step on the road to developing creativity in the minds of our youngsters.

A visit to the Madison Children's Museum is planned as part of the Badgerland Express 2011 Midwest Region Convention April 15<sup>th</sup> – 17<sup>th</sup>.

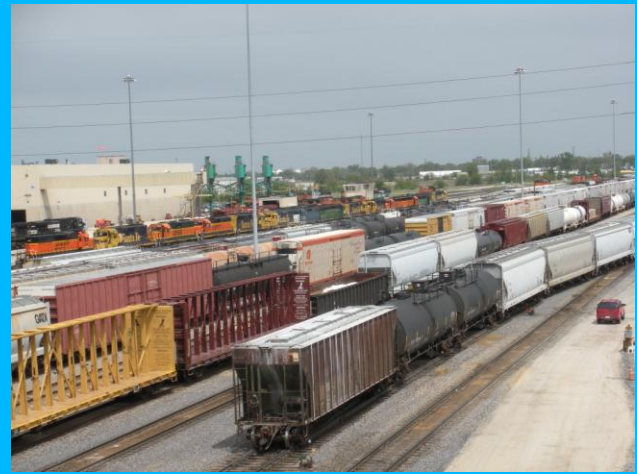


## Railroad History and Model Railroading

by John F. Fisher

My thoughts on the relationship between railroad history and model railroading. Model railroading should be considered as one aspect of the study of railroad history. If done seriously and with attention to detail and accuracy it can represent different eras of railroad history. It brings to life as much as possible the operational components of a railroad from design, construction, operation and maintenance of the line itself to design, construction, operation and maintenance of motive power and rolling stock. The actual operation of a model railroad can be based on real world operational procedures, rules and techniques.

To this end the preservation of railroad history whether it be in the form of drawings, maps, film, videos, photographs, books, procedural manuals, individual railroad history, company records, magazines, artifacts and memorabilia are all important. A serious model railroader will rely on these to accurately reproduce in miniature a working reproduction of rail history to be seen, appreciated and enjoyed by all



## 2011 BNSF Galesburg Yard Tour Is Good to Go!

**Madison Wi.** Steve Lanphear announced at the December meet that the BNSF has approved our request for a Galesburg Yard tour April 29-30, 2011. A preliminary sign-up sheet was passed around for a show of interest only. The trip will leave on Friday morning April 29, and return by 7:00p.m. Saturday April 30, and will include rail fanning at the Rochelle Railroad Park and Galesburg's Peck Park on Friday. The approx. cost will be \$90, which will include all costs EXCEPT meals. Once final costs are determined and announced, reserved seats for the trip will be upon receipt of your check. We are allowed 27 seats this year, so those who went last year can go again if there are seats still open once others have been given a chance. If you are interested in going, and missed the December meet, please send an email to: [splanphear@frontier.com](mailto:splanphear@frontier.com) to get on the preliminary list. Include your phone number and email in the message.



Galesburg Trip 2010

Photo Paul Mangan



## The Caboose - Gone but Not Forgotten

Is the Theme for our Special Modeling Project for the 2010-2011 model railroading season Conducted by John Fisher, Club Project Chair. **TIMES A FLYIN' !!!** Completed entries are due **APRIL 3RD**. **HAVE FUN WITH THE PROJECT AND MAKE IT A SUCCESS!!**

## Up coming rail events

by John Fisher

**Feb 4-13** - 6th Annual Fun Run Model Train Show - De Pere, WI - Van Veghel Auction House & Paluka's Pub, 2050 Profit Pl, Hwy 27 S - See website for times; Free; Featuring the largest modular train layout north of Chicago, Club members will demonstrate O & O27 Gauge trains & accessories; ([www.newogaugers.org](http://www.newogaugers.org))(920-336-8905)

**Feb 5-6** - Rollo Jamison Museum Winter Toy Train Exhibit - Platteville, WI - 405 E Main St - Up to 25 running antique & modern electric toy trains, 10'x30' G-Scale layout, Standard & O Gauge trains, engines, cars, & buildings; Reproduced classic tin-type engines, cars & accessories; Free; ([www.mining.jamison.museum](http://www.mining.jamison.museum))

**Feb 6** - South Central Wisconsin Division Meet - Madison, WI - Knights of Columbus Hall (New Location), 5256 Verona Rd; 1-4 pm; Free; Clinics, model & photo contests, door prizes, home layout viewing; (SCWD, 6187 Sun

Valley Pkwy, Oregon, WI 53575)([www.nmra-scwd.org](http://www.nmra-scwd.org))

**Feb 6** - Rock River Valley Division Meet - Rockford, IL - Midway Village & Museum Center. 6799 Guilford Rd; 12:30-4 pm; \$2 entry donation; Clinics, contests, swap table; (815-332-2496)([www.rrvd-nmra.com](http://www.rrvd-nmra.com))

**Feb 6** - Tri-City Train Show - Racine, WI - Roma Lodge (New Location), 7130 Spring St (Hwy C) - 8 am-noon; \$3, Early Admission:7-8 am \$5, Children 12 & under are free; (Ron Solberg - 262-488-0193)

**Feb 11-13** - Snow Train - North Freedom, WI - Mid-Continent Railway Museum - Check website for fees/times - Dinner trains available; (800-930-1385)([www.midcontinent.org](http://www.midcontinent.org))

**Feb 12-13** - 30th Annual Barron County Model RR Club Show - Rice Lake, WI - Cedar Mall, From USH 53, take exit #140 east on Cty Hwy O (aka South Access Rd); Sat 10 am-5 pm, Sun 11 am-4 pm; (Joe Lewis - 715-450-9526)

**Feb 12-13** - Rollo Jamison Museum Winter Toy Train Exhibit - Platteville, WI (See Feb 5-6 listing)

**Feb 13** - Great Midwest Train Show - Wheaton, IL - Du Page County Fairgrounds, 2015 W Manchester Rd (County Farm Rd & Manchester Rd, 2 blocks north of Roosevelt Rd) - 9:30 am-3 pm; \$7, under 12 free; (630-290-1962)([www.dupageshow.com](http://www.dupageshow.com))

**Feb 18** - All Star Railroad Night - Society of Model Engineers & Assoc of Model Railroad Clubs - Milwaukee, WI - Milwaukee School of Engineering, 3rd Floor Student Center, 1025 N Broadway - 7:30 pm, Doors open at 7 pm; Free; Programs: A Union Pacific Spectacular & Out of the Past - Just for You!; (Jim Marker - 414-906-8883)

**Feb 19-20** - 44th Annual Mad City Model Railroad Show & Sale - Madison, WI - Alliant Energy Center - 9 am - 5 pm both days; Adults \$10 (12 & older), Seniors \$9 (65 & older), Children \$4 (age 5-11), Kids under 5 Free; 90,000 sq ft, 300+ tables (SCWD - 608-835-3148)([www.nmra-scwd.org](http://www.nmra-scwd.org))

**Feb 20** - WISE Division Meet - Waukesha, WI - Country Springs Hotel - 1 pm; Free; Clinics, swap tables layout tours, door prizes; ([www.wisedivision.org](http://www.wisedivision.org))

**Feb 20** - Lionel RR Club Train, Toy & Collectibles Show - New Berlin, WI - New Berlin Entertainment Center, 16000 W Cleveland Ave; 8 am - 12:00 pm; \$4, Kids 12 and under free w/Adult (414-764-5375)([www.milw-lrrc.com](http://www.milw-lrrc.com))

**Feb 26** - North Western Illinois Chapter - National Railway Historical Society - Rockford, IL - St Mark Church, 675 N Mulford Rd; 7:30 pm, Doors open at 7 pm; Free; Slide presentations; (Jerry Pyfer - 815-654-2087)

**Feb 26-27** - 23rd Annual Depot Stove Gang Model Railroad Show & Swap Meet - Lena, IL - LeWin Elementary School Gym (Also at LeWin Junior & Senior High School Gyms), 401 Fremont St; Sat 10 am-5 pm, Sun 10 am-4 pm; Free, Donations appreciated; Lunch available; (Butch Polhill - 815-369-2624)

**Feb 27** - Badgerland S Gaugers Model Train Swap Meet - Greenfield, WI - Knights of Columbus Hall, 3200 S 103rd St; 8 am-12 pm; \$3, Children under 12 free; Operating Layout/Videos; All Scales/New & Used; Food available; (Jeff Young - 262-250-0618)

## Ongoing Events

**Jan 15 - Apr 3** - Wisconsin Garden Railway Society Show - Milwaukee, WI - Mitchell Park Domes, 524 S Layton Blvd Daily 9 am-5 pm, Fri's 9 am-9 pm; \$4 adults, Age 6-17 & Milw Cty Seniors \$2.50; G-Scale trains, Theme: Storybook Tales; (Tom Lemke - 920-922-6611)

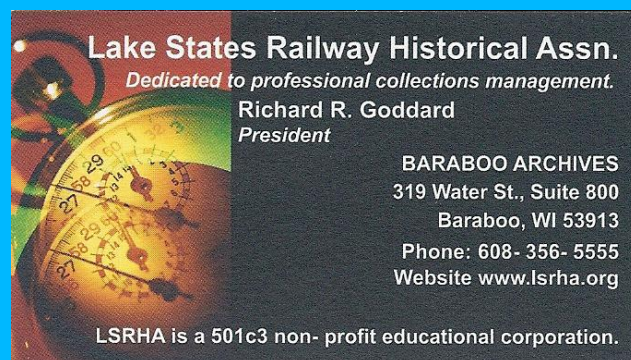
**National Railroad Museum** - Green Bay, WI - 2285 S Broadway St - Museum is open daily all year-round except for several holidays. Check w/museum for fees & schedules; (920-437-7624)([www.nationalrrmuseum.org](http://www.nationalrrmuseum.org))

**Blackhawk Model Railroad Club** - Oregon, IL - Conover Square Mall, 2nd Floor, Corner of 3rd & Franklin; Sat 10 am-4 pm, Sun 1 pm-4 pm, Wed 12 pm-3 pm; Free, donations accepted; Large HO Scale layout, Also trains in

Z, N, S, O and G. There is also a Burlington depot under restoration on the BNSF mainline on the south end of town. Oregon is 27 miles south of Rockford, IL between there and Rochelle, IL; ([www.conoversquare.com](http://www.conoversquare.com))

**Rochelle Railroad Park** - Rochelle, IL - 124 N 9th St - Double Diamond of BNSF & UP Railroads, Lots of train action year-round; Shelter w/picnic tables & Toilet facilities; Gift Shop 10 am-5 pm (Closed Tues), Call ahead for Winter for hours (Gift Shop Phone: 815-561-1231)([www.rochellerailroadpark.org](http://www.rochellerailroadpark.org))

**The Model Railroad Club of Milwaukee, Inc.** - Milwaukee, WI - 215 E National Ave - Under the Soo Line (Canadian Pacific) Tracks, In the former Milwaukee Road Allis Station, Originally built as part of the South Bridge Abutment; Featuring O Scale Model Railroading; Mon (Except the last Mon of each month) 7 pm-9 pm, Third Fri of every month 7 pm-9 pm, Last Sun of every month 1:30 pm-4 pm. ⊗



**Lake States Railway Historical Assn.**  
*Dedicated to professional collections management.*  
Richard R. Goddard  
President

BARABOO ARCHIVES  
319 Water St., Suite 800  
Baraboo, WI 53913  
Phone: 608-356-5555  
Website [www.lsrha.org](http://www.lsrha.org)

LSRHA is a 501c3 non-profit educational corporation.



You can be an engineer on the

**Southern Wisconsin Sandhouse Crew**

HO scale modular layout  
visit the club website:  
<http://www.webng.com/sandhousecrew/>

# Introducing the best deal in model railroading.

Join the NMRA for 6 months for just \$9.95!

- Have easy access to one of the world's largest railroad libraries...which includes over 100,000 prototype photos, 6,000 books, and over 50,000 modeling, prototype and historical society magazines
- Experience the fellowship and fun of getting modeling help and discussing the hobby with other members in your area
- Receive reduced rates on special insurance for your layout or collection
- Get admission to local model railroad meetings and events
- Receive 6 monthly issues of *Scale Rails* magazine
- Have access to standards information and data sheets
- Be a part of programs like "Modeling With The Masters," Pike Registry, Estate Counseling, contests, clinics, the Achievement Program and more!

Visit [www.nmra.org](http://www.nmra.org) to see what you're missing!

### Sign me up!

Fill out this form and include your payment.  
 U.S.: Send \$9.95 (U.S.) to NMRA-Rail Pass Membership, 4121 Cromwell Road, Chattanooga, TN 37421-2119.  
 Canada: Send \$9.95 (CAD) to NMRA-Canadian Rail Pass Membership, 69 Schroder Cres., Guelph, ON N1E 7B4, Canada.

Name \_\_\_\_\_  
 Address \_\_\_\_\_  
 City/State/Zip \_\_\_\_\_  
 Phone (\_\_\_\_) \_\_\_\_\_  
 Email \_\_\_\_\_

Check     Credit card

Credit Card # \_\_\_\_\_  
 Credit Card Exp. \_\_\_\_\_  
 Signature \_\_\_\_\_



\*Rail Pass offer is for new members and those who have not been NMRA members for two years or more. Individuals can join at Rail Pass rates only since membership renewal will be at the regular membership rate. Rail Pass members can attend conventions and participate in contests, but cannot vote or hold office, and will not receive a New Member Pak.

So much bang. So few bucks.

N and HO Gauge Trains and Accessories  
 Tools and Hobby Supplies  
 Train and Hobby Books  
 Come check out our N and HO Layout

## THE LAST SQUARE HOBBY DEPOT

5944 Odana Rd - Madison, WI. 53719 - 608-278-4401

Hours  
 Sun: 12-5  
 M-F: 10-8  
 Sat: 10-6

## Photography by Sean Lamb

- Completed layouts
- Portraits
- In-progress models
- Any scale/gauge

Call for a free quote

## The Hobby Depot

**Brian Stackpole**  
owner

835-17th Street  
 Monroe, Wisconsin 53566  
 Phone: 608-325-5107  
 Fax: 608-325-5130  
 email: [hobbydpo@tds.net](mailto:hobbydpo@tds.net)  
**TRAINS & MORE**

<http://seanlambphoto.com>  
[sean@seanlambphoto.com](mailto:sean@seanlambphoto.com)  
 608-213-6414

## HOBBY HORSE

RADIO CONTROL • HOBBIES • CURLING SUPPLIES  
 DIVISION OF HOBBY HORSE WISCONSIN, INC.

JIM BIERSACH  
 President

1769 THIERER ROAD (608) 241-3491  
 MADISON, WI 53704 FAX (608) 241-1313  
[hobbyhorse@hobbyhorse.com](mailto:hobbyhorse@hobbyhorse.com) 1 (800) 604-6229

Howard Samarin  
 Cell phone: 562-884-1040  
 E-mail: [howard@yousq.net](mailto:howard@yousq.net)

## ADAIR SHOPS™

Weight Upgrade Kits for Contemporary Model Railroad Cars

ADAIR SHOPS Tel: 563-875-7663  
 Mail: P.O. Box 344 Fax: 563-875-7365  
 Office: 238 Second St. NE  
 Dyersville, IA 52040

RITE WEY™ THIN WEIGHTS | SCALE LOADS | STEEL PLATES & SLABS  
 WEIGHT BOND™ NON-TOXIC GLUE | HAZCODE N BODY PUTTY



# Come Join Us for the *Badger Express 2011*

**April 15-17, 2011**

to be held in

**Madison, Wisconsin**

at the [Radisson Hotel](#)

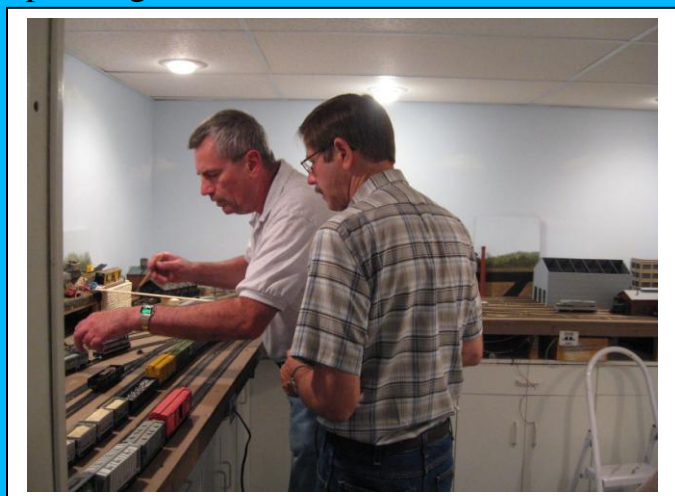
517 Grand Canon Drive, Madison WI

Tentative timetable:

The 2011 Midwest Region, NMRA, Spring Convention will be hosted by the South Central Wisconsin Division (SCWD) of the NMRA, at the Radisson Hotel, located on the west side of Madison just off Hwys 12/18 near West Town Mall.

The hotel features many amenities: indoor pool and whirlpool, exercise room, game room, laundry, business center, and in room high speed internet connections. The hotel also features an in house restaurant and many restaurants located within walking distance. We have blocked all available rooms at the hotel with room rates starting at \$99/night, (larger suites are available for groups and dealers at \$129/night). For reservations call: 1-800-395-7046 or locally: 608-833-0100, and ask for NMRA rate.

We will also have open our usual exceptional layouts (large and small) open for both operating sessions and tours.



	Date/time	Rail	Non-rail/Youth/Gen
Friday	Noon-8pm	Registration	
	7pm	Clinic (2)	Clinic NR
	7-9pm	Contest room open for entries	
	7-9pm	Auction room open for entries	
	7-10pm(?)	Layouts and operating session	Youth (8-18) op session at the Radisson Hotel
	8:15pm	Clinic (2 or 3)	Movie Classic: <i>The Broadway Limited</i>
Saturday	7:30am-6pm	Registration	
	7:30am-12pm	Contest room open for entries	
	7:30am-5pm	Auction room open for entries	
	8:00am	Clinics (3)	
	9:15am	Clinics (2)	Clinic NR
	10:30 am	Clinics (2)	Clinic (NR)
	1-4pm		NR Tour
	1-4:30pm	Contest room open for viewing	
	1-5pm	Layouts open	
	1:30pm	Clinic (2)	Clinic NR
	4pm	Clinic (1)	Movie: <i>Orient Express</i>
	5-6pm	Contest room open for entry pickup	
	6pm	Cocktail hour	
	6:30pm	Banquet	
7:30pm	Presentations/Awards		
8:00pm	Annual Meeting/Auction		
	8am-noon	Registration	
	8:30am	Clinic (2)	Clinic NR
	10am-noon	Regional Board Meeting	
	10am-11:30	Clinic (3)	
	Noon-5pm	Layouts open	

In 2011, we are again emphasizing youth and non rail activities, and offering you registration at an affordable rate.

Come "Catch the Badger"! *It's never too early to register...*

Get on board for the 2011  
**Badgerland**  
**Express**

sponsored by the South Central Wisconsin Division  
of the National Model Railroad Association

**April 15-17, 2011**



First Name \_\_\_\_\_ Last Name \_\_\_\_\_

Address \_\_\_\_\_

City \_\_\_\_\_ State \_\_\_\_\_ Zip \_\_\_\_\_ - \_\_\_\_\_

Phone (\_\_\_\_) \_\_\_\_\_ - \_\_\_\_\_ e-mail \_\_\_\_\_ NMRA# \_\_\_\_\_

Fares	Names	Dinners \$30.00/meal				Total
		Qty	Steak	Chicken	Veg	
Full Fare(s) NMRA Member \$60/member (fare does not include the cost of dinner)						
Full Fare(s) Non Member \$65/non-member (fare does not include the cost of dinner)						
Non Rail(s) \$45/Non rail (fare does not include the cost of dinner)						
Youth \$10/Youth (fare does not include the cost of dinner)						
(If more space is needed for names, please attach additional information on separate sheet.)						
Totals						

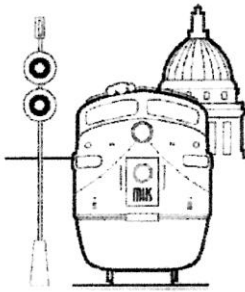
**OPERATING SESSIONS:** All Friday operating sessions start at 7pm. Space is limited, so if you plan on participating at an operating session, please indicate below:

Participant Name	Want to operate with	Scale			Total
		O	HO	N	

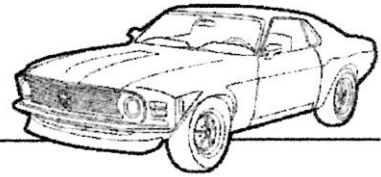
**Please make check payable to: SCWD**  
**Mail registration to: Barb Rothwell, registrar**  
**5667 Concord Dr**  
**Fitchburg WI 53575-1906**

**Hotel information:**  
Radisson Hotel (see reverse side for more info)  
517 Grand Canon Dr  
Madison, WI

**Total payment enclosed:** \_\_\_\_\_



# MADISON HOBBY STOP



6622 Mineral Point Road, Madison, WI 53705

phone: 608.829.3820 • fax: 608.829.3842 • www.madisonhobbystop.com

Hours: Monday - Friday (10am - 8pm) and Saturday (10am - 5pm)

Model Railroading • Plastic Model Kits • Rockets & Accessories • Pine Car • Paints • Tools and more!

SPECIALS!

**Thank you for your Support**  
**Remember, most model railroad items are**  
**20% off**

**With a valid NMRA or other club id card**  
*Excludes discounted or sale items, magazines, and consignments*

**25% off Athearn, Atlas, Kato, and Life-Like**  
**Pre-Orders**

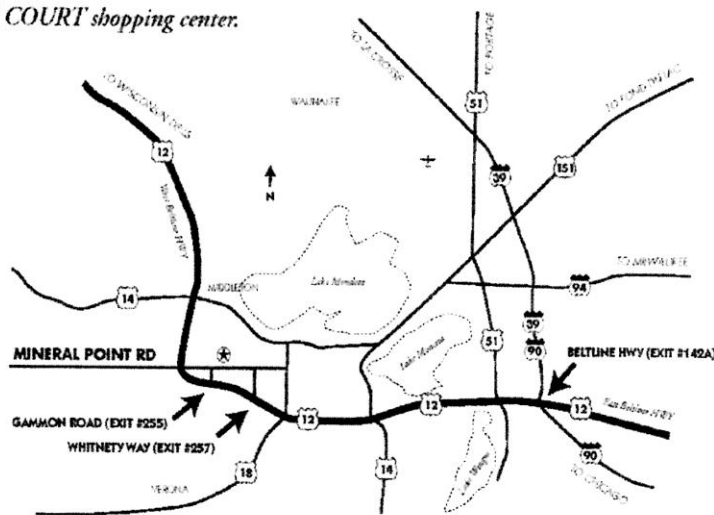
**Authorized Lionel Dealer**

**Stop by and see us at the**  
**Mad City Model Railroad Show and Sale**

*Located INSIDE the CLOCK TOWER COURT shopping center.*

**Directions:**

**From points east:** Take I-39/I-90 to exit #142A to East Beltline Highway. Proceed west for 12 miles and take Gammon Road exit #255 north to Mineral Point Road. Take a right on Mineral Point Road and then left on Grand Canyon Road, then turn right into the *Clock Tower Court Shopping Center*. Distance from I-39/I-90 exit #142A to Gammon Road exit #255 via Beltline Highway is 11.8 miles. **From points west:** Take the west Beltline Highway east to Gammon Road exit #255. Take Gammon Road north to Mineral Point Road. Take a right on Mineral Point road and then left on Grand Canyon Road, then turn right into the *Clock Tower Court Shopping Center*.





*ARRIVING JUST IN TIME...*

# STOREWIDE INVENTORY REDUCTION SALE!

- **10% Off** sale prices with this ad
- Recently discounted *specials*
- Phone Orders welcome
- Some items in *limited* supply
- Ad Discount expires 2/28/11

And, as always, we will continue to offer **10% off** msrp on all N & HO scale products.  
Check us out either in person, by phone, or via the internet.

***A Plus Trains***

Exclusively Trains!

**130 Main Street – Elroy, WI 53929 – 608-462-8720**

Most major credit cards accepted – will ship at purchaser's expense

**Hours: Mon. – Fri. 9 am – 5:30 pm, Sat. 9 am – 3 pm**

Web site: [www.aplustrains.com](http://www.aplustrains.com) Email: [trains@aplustrains.com](mailto:trains@aplustrains.com)

**JERRY and PAM KINTZ**  
608.647.8196  
jhobby@countrysspeed.com

P.O. Box 61  
Richland Center, WI  
53581

[www.jerryshobbyjunction.com](http://www.jerryshobbyjunction.com)

## Advertising rates:

Our advertising rates are pro-rated for our 10 issue printing cycle, starting in September of each year. Contact Bad Order Editor for more information.

<p>Full page \$100/yr Half page \$50/yr Quarter page \$25/yr Business card \$20/yr</p>
--

## BOD Meeting Minutes

Can be found on the SCWD website version of the Bad Order [www.nmra-scwd.org](http://www.nmra-scwd.org).



## PLEASE PATRONIZE OUR AREA HOBBY STORES

Hobby Horse – 1769 Thierer Road – Near East Town, Madison WI

The Hobby Depot – 835 17<sup>th</sup> Street – Monroe WI

*A Plus Trains* – 130 Main Street – Elroy WI

The Last Square Hobby Depot – 5944 Odana Road- Madison WI

Madison Hobby Stop – 6622 Mineral Point Rd (inside Clock Tower) – Madison WI

Kornely's Craft & Hobby Center – 130 Front St. (Bus. 151/Hwy. 33) – Beaver Dam WI

Larry & Phyl's Hobbies – 500 North Parker Drive – Janesville WI

Jerry's Hobby Junction – Richland Center, WI

### 2010-2011 Meeting Schedules

#### Regular

Feb 6, 2011  
Mar 6, 2011  
April 3, 2011

#### BOD

Feb 14, 2011  
Mar 14, 2011  
April 11, 2011

#### Youth Group

Rail Show  
TBD  
TBD

## TRAIN GUYZ LLC

*We can make you model railroad dreams come true.*

2903 Robin Court  
Fitchburg, WI 53711  
608-215-6346  
Vivion2@tds.net

**Mike Vivion**

# SCWD – December 2010 Board Meeting Minutes

Call to Order: Determine if a quorum is present.

- Members Present: Paul Mangan, Phil Hottmann, Charles Karpelenia, Larry Enlow

Old Business:

- Charles Karpelenia made the motion to approve the minutes of November 8, 2010, Larry Enlow seconded the motion. The minutes were approved unanimously.

New Business:

- Charles Karpelenia made the motion to table the Pay Masters Report until next BOD meeting. Seconded by Larry Enlow. The motion was approved unanimously.

Committee Reports:

- Web Site/Company Store: No report.
- Youth Group: Larry Enlow reported that 6 members were at the last meeting. He also reported that there are 24 sections of the old modules at Old Seed and most of the sections have been spoken for. Some discussion by the BOD to determine the disposal of trains and buildings. The Youth Group will have first pick of these items. The rolling stock will be wrapped in newspaper and the item will be a surprise when it is taken home by the Youth Group member.
- Club Project/Publications: Via Paul Mangan, John Fisher reported that all the Cabooses are out. John Fisher requested more posters for the train show.
- Bad Order: Paul Mangan reported that the Bad Order is out. Charles Karpelenia made a motion to make Paul Mangan the new Bad Order editor. The motion was seconded by Phil Hottmann. The motion was approved unanimously.
- Club Liaison: Paul Mangan reported the Rail School is coming up on January 9, 2011. The G scale group will be at Olbrich and Janesville.
- Train Show: Paul Mangan reported that everything is going smoothly, we still could use many more volunteers.
- Clinics: No clinics for the January because of the Rail School.
- Door Prizes: Ok on door prizes.
- Layout Tours: Phil Hottmann reported that we will not have a layout tour for the January meeting and that he does not have a tour set for the February 6<sup>th</sup> meeting. Contact Phil Hottmann if you would like to have a tour of your layout.
- Membership: No report.
- Picnic: No report. The BOD discussed the possibility of a new picnic site and a bus tour for touring local layouts after the picnic. No decision has been made by the BOD.
- Region Convention Badgerland Express 2011: Via Paul Mangan reported the convention is on target and the clinics are doing well and the rail tours are all set.
- Banquet: No report.
- Election Committee: No report.

Old Business:

- Paul Mangan reported that the supply of SCWD Lapel pins for the train show are in. Charles Karpelenia made a motion that free pins will be received by members who work the show, non members who work will pay our cost of the pin. The motion was seconded by Larry Enlow. The motion was approved unanimously.
- The Hobby Shop clinics are on hold due to illness.
- Via Paul Mangan, Bob Bolter reported that he would be able to keep to the budget set by the BOD in their November meeting.
- The construction is underway for the Oregon Museum module as reported by Larry Enlow. If anyone would like to donate non working steam engine circa about 1900 and some cars contact Larry Enlow.

## **New Business:**

- Via Paul Mangan, Steve Lanphear reported that the Galesburg trip is on. Dates will follow. The railroad has told Steve that they will take up to 28 people and the cost will include everything except your food. The group will be staying at a different location.
- The BOD discussed the possibility of making the Banquet/Picnic and Club Projects as a Chair Positions. The BOD tabled it until a full BOD was available to discuss it further.
- The BOD discussed possible dates for the picnic on either July 9<sup>th</sup> or 16, 2011 and the banquet on either April 19 or May 7, 2011. A final date will be determined later.
- Larry Enlow made a motion to donate money for the meeting space to the Non Profit Fund for the Fitchburg Fire Dept. and the motion was seconded by Charles Karpelenia. The motion was approved unanimously.
- Adjourn

Next SCWD meeting is January 9, 2011, at the Knights of Columbus Hall on Verona Road at 1:00 pm.

Next BOD meeting is January 10, 2011, at 7 pm at the Fitchburg Fire House on Lacy Road.