

February 2012

www.nmra-scwd.org

Volume 43 No.6

## Mad City Model Railroad Show and Sale 2012

**Here we go!** It's hard to believe but another year has come and gone. Now it is our turn to host a train show. It is hard to believe that this is our 45<sup>th</sup> consecutive train show. There are a lot of us members who were not around in the early days of these shows but I can remember some of the earlier shows like the ones at Edgewood High School on some nasty days when it was a lot nicer inside.

### Next Regular Meet:

February 5<sup>th</sup>, 2012 1:00 pm.  
Knights of Columbus Hall  
5256 Verona Rd, Fitchburg, WI

### Model & Photo Contest:

#### Locomotives:

Master Builder Locomotives  
(See page 3 for details)

### Next BOD Meeting:

February 13<sup>th</sup> 2012 7:00 p.m.  
Fitchburg Fire Station

### Next Youth Group Meeting:

Rail Show February 19<sup>th</sup> 2012 Page 6

### Spring Trip Announcement:

See Page 10

When I finally became a full NMRA and SCWD member we were just beginning our run at the Alliant Energy Center.

These shows could not have happened without your help. Even at this late date if you want to join the team you can talk to me or Mike at the February meeting and I know we can find a place for you. We will probably still have some fliers left to hand out so please pick some up and pass them out to any one you see. I've passed them out to people and heard comments such as 'wow, just what I've been looking for'. Give it a whirl, its fun and easy.



All Aboard!



45TH ANNUAL

# MAD CITY MODEL RAILROAD SHOW AND SALE

Feb. 18-19, 2012 • 9am-5pm

Alliant Energy Center, Exhibition Hall, Madison, WI

IT'S HUGE! 90,000 sq. ft. of the Midwest's biggest and most beautiful model train layouts in Z, N, HO, S, O and G scale; classic toy trains; & historical exhibits. Kids can build a giant wooden train layout or run a model train. Browse 300+ tables of model train merchandise: tools, railroad collectibles, videos, books, clothing and artwork. Hourly door prizes. Kids, age 5-11, can register to win an HO scale train set - 4 given away each day of the event!

Adults-\$10 (12 & older), Seniors-\$9 (65 & older), Children-\$4 (age 5-11), Kids under 5-FREE  
Active duty military \$9. Two day pass \$17. Parking fee not included. All children under 12 must be accompanied by an adult.

\$1 off advanced sale tickets-available at local hobby shops-see Web site for locations

**A Great Family Entertainment Value!**

www.nmra-scwd.org

## CATCH THE TRAINS!

©2011, SCWD-MRRA, Sponsored by the South-Central Wisconsin Division of the National Model Railroad Association.

# Super's Report

Mike Vivion

Division Superintendent

The SCWD Rail School always jump starts the New Year. Thanks to all the members who came out on January 8<sup>th</sup> and participated in kicking off the 2012 season in a big way. I'm pleased to report we had more than 150 guests, youth and members participate in our annual Rail School. This was the highest attendance we have had for quite a while. Thank you to Andy Potts and all those members who gave demonstrations or helped out in any way to make the school a success. I personally spoke with several guests who had never attended the school or an SCWD meeting previously and invited them to our February meeting. Hopefully we will see a lot of visitors on February 5<sup>th</sup>. An additional thanks go to the SCWD Youth Group Leaders and Members who did the Make and Take section of the school. I saw a lot of youngsters walking around smiling and carrying the cars they had assembled and were taking home. We hope their parents will bring them back to future meetings of the Youth Group.

As many of you already know, another long time SCWD member, Bob Felten, passed away on January 2nd. Bob previously served on the SCWD Board and served the Midwest Region at several levels, and he was also member of the Madison HO Trak group. Bob was an excellent modeler and known to many model railroaders through the time he spent at the local hobby shops. Another good friend of the SCWD, Gary Children of the WISE Division, lost his wife during the holidays. I also learned that two of our members, John Haverberg and John Kosobucki, lost family members during this time. On behalf of the SCWD, our condolences are extended to the families of all these who passed away.

I am pleased to report that member Bob Coleman left the hospital before Christmas and is continuing to rehab at home as an out-patient. Bob says he is determined to serve as a volunteer at the Rail Show next month. We look forward to seeing you there, Bob!

Preparations for the Rail Show are coming together, and things are looking good as we are just a month away now.

Our regular meetings start up again on February 5<sup>th</sup>, and our usual format will be back in place. Check the

clinic schedule and remember to bring along your locomotive models and photographs of locomotives - be they diesel, gas, steam or electric - prototypes or models!

Now that Winter is back and there's snow on the ground, it's time to think model railroading. See you on the 5<sup>th</sup>.

Mike



Rail School 2012

## Clinics Column

by Steve Lanphear

At our February 5 Meet, our first clinic will be: **“Making Photo Backdrops from Digital Photos“** by **Bob Wundrock MMR**. Bob will present a clinic on how to make photo backdrops for your layout.

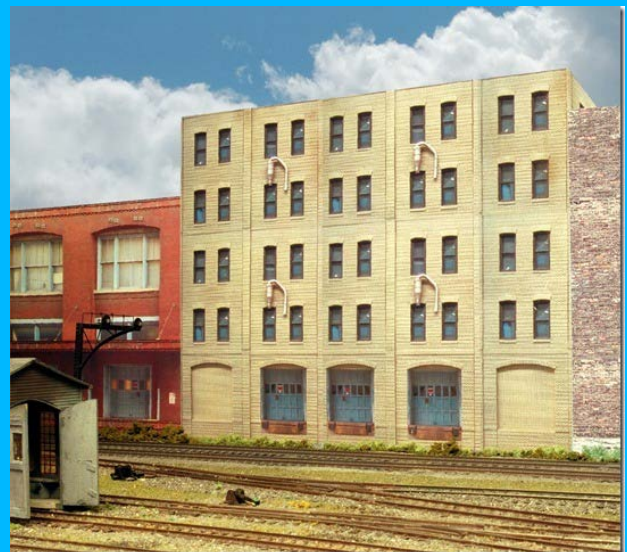


Photo B. Wundrock

Bob has made extensive use of digital photos and manipulated photos to fill in several blank backdrop spaces on his layout. Now he will show you the techniques he uses to accomplish this.

For our second clinic, Mike Vivion will lead a discussion of “**Plans for the SCWD 50th Anniversary in 2013**”, followed by a short train video.

Here is what is planned so far for the months ahead:

**February 5 – Making Photo Backdrops –  
Bob Wundrock + Plans for the SCWD 50th  
Anniversary in 2013 / plus a train video**  
**March 4 – Airbrushing Techniques/Hands-on  
Airbrush Stations/New Weathering  
Powder Techniques –  
Testors Co. Rep-Adam Morrison**  
**April 1 – Modeling The Prototype Layout  
Bill Ehlert  
Railfanning in the LaCrosse Area  
Will Watry(Winnebagoland Div.)**  
**May 6 – History of Amtrak (40th anniv. A  
National Amtrak speaker will speak) also  
Static Grass Techniques – Dave Leider  
(Midwest Region)  
This is our joint Meet w/ Rockford**

If you are interested in presenting a clinic next year on one of your summer experiences, a scenery technique that you have perfected, or know of someone who would be willing to do a clinic for us, please contact me at [splanphear@frontier.com](mailto:splanphear@frontier.com) .

⊗

## **Layout Tours – February 2012**

By Phil Hottmann

January was Rail School 2012 and no tours were scheduled. For February Ron Halvorson will be opening his layout. This is Super Bowl Sunday and we now know that the Packers are not playing. This means I will try to schedule another layout as well. If you really want to watch the Super Bowl you can still make it home in time.

**I also need** to fill railroad tours for the rest of the season. If anyone is interested in showing their layout please contact me. I’m in the Red Book or see me at the February meeting.

⊗

## **Contests**

By Chris and Nikki Roeben

Can you remember the days when cigarette ads were plentiful on television and radio? We can be very thankful they have gone away. Smokes have been proven to raise havoc with ones health. How does this topic relate to contests though? Well, one of these brands had a catch line that said “it’s what’s up front that counts”. In our hobby that means the locomotive. Without motive power the train stays put. This month’s contest theme is the locomotive. Bring in your power units; Diesel, Gas, Steam, or Electric. Show us what pulls your trains.

Participation in the contests, both model and photography continues to grow. Please keep bringing in your entries so we can all see your talents.

Keep in mind that February and March are the last opportunities this season to have your models judged for AP points that count toward the Madison Mac Award. If you want an item judged you must set it up with Sean Lamb. His info is in the Red Book.

Thanks from Nikki and me.

## **February 5<sup>th</sup> 2012**

**Theme: Locomotives**

**Master Builder – Locomotives**

- A. Diesel and Gasoline powered
- B. Electrically-powered
- C. Steam Powered

## **March 4<sup>th</sup> 2012**

**Theme: - Closed and Covered Freight Cars**

**Master Builder – Cars**

- A. Box and Refrigerator Cars
- B. Stock Cars
- C. Tank Cars
- D. Covered Hoppers and Gondolas

⊗

## **Editors Side Track:**

Paul Mangan

If you’re like me then you are already tiered of the political ads on television and radio. It’s as if you can’t get away from any of it no matter how hard you try. Well, I hate to do it to you but I have to bring it up here in the Bad Order.

As you know we have an election for our Board of Directors coming up this April. As of now we have one new candidate running for the Board but we have one member retiring so we would be in the same position as last year. Being the chair of the election committee I would like at least one more person to toss their hat in to the ring. It makes the election a bit easier to conduct and I could always use another hat.

If you would like to serve a term on the board please let me know and I will put you on the ballot. My info as usual is in the Division Red Book. I will have all the candidates listed in the March and April Bad Order. This is the only place you will see these ads. We don't allow any TV, Radio, or other news paper ads. Only in the Bad Order will you find this vital information.

I have been informed that the **Red Book** will be published for the 2013 season. Now is a good time to check that your information currently in print is correct. If you are new to the division be ready when I send out the request for your info. We may also need your permission to print your info because of NMRA privacy policy.

Paul

⊗

## Bob Felten



The SCWD and HoTrak lost a long time member on January 2<sup>nd</sup> 2012. Bob Felten was an exceptional modeler and a man who always had a smile on his face for every one. A good gathering of Division members attended his services to bid him farewell and condolences to his family. Bob will be missed.

⊗

## SCWD SPECIAL MODELING PROJECT 2011-2012

“**The Tunnel**”, The Light at the end may be a Train: is the theme for our "Special Modeling Project" this model railroading season.

**TIMES A FLYIN!!!** Completed entries are due **APRIL 1ST.**

John F. Fisher  
Special Project Chair

⊗

## Upcoming Rail Events - January 2012 Conducted by John F. Fisher

**Feb 3-11** - 7th Annual Fun Run Model Train Show - Green Bay, WI - Green Bay Salvation Army Kroc Center, 1315 Lime Kiln Rd - See website for times; Free; Featuring the largest modular (50'x90') train layout north of Chicago, Club members will demonstrate O & O27 gauge trains & accessories; Mike Conrad (920-336-8905) ([www.newogaugers.org](http://www.newogaugers.org)).

**Feb 4-5** - Rollo Jamison Museum Winter Toy Train Exhibit - Platteville, WI - 405 E Main St - Sat 10-4, Sun 10-4; Free; Up to 25 running antique & modern electric toy trains, 10'x30' G-scale layout, Standard & O gauge trains, engines, cars, & buildings; Reproduced classic tin-type engines, car, & accessories. (608-348-3301) ([www.mining.jamison.museum](http://www.mining.jamison.museum)).

**Feb 5** - South Central Wisconsin Division Meet - Madison, WI - Knights of Columbus Hall, 5256 Verona Rd - 1-4 pm; Free; Clinics, model & photo contests, door prizes, home layout viewing; SCWD, 6187 Sun Valley Pkwy, Oregon, WI 53575 ([www.nmra-scwd.org](http://www.nmra-scwd.org)).

**Feb 5** - Rock River Valley Division Meet - Rockford, IL - Midway Village & Museum Center, 6799 Guilford Rd; 12:30-4 pm; \$2 entry donation; Clinics: TBA; Contest: On Line Structures; Swap table; (815-332-2496) ([www.rrvd-nmra.org](http://www.rrvd-nmra.org)).

**Feb 5** - Tri City Train Show & Swap Meet - Racine, WI - Roma Lodge, 7130 Spring St (Hwy C) - 8am-12pm; \$3, Children free; Ron Solberg (262-488-0193).

**Feb 10-12** - Snow Train - North Freedom, WI - Mid-Continent Railway Museum - E8948 Diamond Hill Rd - Diesel locomotive 50 min round-trip ride on a former CNW branch line, First Class & Dinner Trains available; Check website for fares/times; (800-930-1385) ([www.midcontinent.org](http://www.midcontinent.org))

**Feb 11-12** - 31st Annual Barron County Model Railroad Club Show - Rice Lake, WI - Cedar Mall, 2900 S main St - Sat 9:30am-6pm, Sun 11am-4pm; Free; Raffle Grand Prize "Coffee Table" Model Train Layout; More details call Joe Lewis (715-450-9526), Jon Allen (651-303-4889)([stcroixsub@yahoo.com](mailto:stcroixsub@yahoo.com))

**Feb 11-12** - Rollo Jamison Museum Winter Toy Train Exhibit - Platteville, WI (See Feb 4-5 listing)

**Feb 12** - Great Midwest Train Show - Wheaton, IL - Du Page County Fairgrounds, 2015 W Manchester Rd (County Farm Rd & Manchester Rd, 2 blocks north of Roosevelt Rd); 9:30am-3pm; \$7, Under 12 are Free, See website for \$1 off coupon; 200+ Exhibitors, 5 buildings, Over 500 Tables; (630-290-1962)([www.GreatMidwestTrainShow.com](http://www.GreatMidwestTrainShow.com))

**Feb 18-19** - 45th Annual Mad City Model Railroad Show & Sale - Madison, WI - Alliant Energy Center, Exhibition Hall, 9am-5pm both days; Adults \$10 (12 & older), Seniors \$9 (65 & older), Children \$4 (age 5-11), Kids under 5 Free, Active Duty Military \$9. Two Day Pass \$17, advanced sale tickets-available at local hobby shops (see website for locations), Parking fee not included; 90,000 sq ft, 300+ tables; For more info: ([www.nmra-scwd.org](http://www.nmra-scwd.org)).

**Feb 25** - North Western Illinois Chapter - National Railway Historical Society - Rockford, IL - St. Mark Lutheran Church. 675 N Milford Rd; 7:30pm, Doors open at 7:00pm; Free; Slide presentations TBA, Sales tables; Jerry Phyfer (815-654-2087).

**Feb 25-26** - 24th Annual Depot Stove Gang Model Railroad Show & Swap Meet - Lena, IL - 401 Fremont St, LeWin Elementary School Gym (Also at LeWin Junior & Senior High School Gyms); Sat 10am-5pm, Sun 10am-4pm; Free, Donations appreciated; Lunch available 10am-3pm; Butch Polhill (815-369-2624).

**Feb 26** - Lionel RR Club Train, Toy & Collectibles Show - New Berlin, WI - New Berlin Entertainment Center, 16000 W Cleveland Ave - 8am-12pm; \$4, Kids 12 & under free w/adult; Bob Nabak (262-787-0939)([www.milw-lrrc.com](http://www.milw-lrrc.com)).

**Feb 26** - Badgerland S Gaugers Model Train Swap Meet - Greenfield, WI - Knights of Columbus Hall, 3200 S 103rd St - 8am-12pm; \$3 Donation, Children under 12 are free; Operating Model Train Layout/Videos, Door prizes, All Scales/New & Used, Model Train Repairs Made On Site, Food available; Jeff Young (262-250-0618)([www.Trainweb.org/bsg](http://www.Trainweb.org/bsg)).

## Ongoing Events:

National Railroad Museum - Green Bay, WI (See Jan 2012 BO Online)

Northern Illinois Historical Railway Association - Argyle, IL (See Jan 2012 BO Online)

**Jan 14-Mar 18** - Fantasy Garden Train Show - Milwaukee, WI - The Domes - 524 S Layton Blvd; Weekdays: 9am-5pm, Weekends 9am-4pm; \$4 Adults, Age 6-17 & Mil Cty Seniors \$2.50; Wisconsin Garden Railway Society Show, G-Scale Trains. Our trains wind their way around a magical garden of fantasy featuring flower fairy figures amongst a beautiful landscape of miniature plants & flowers. Tom Lemke (920-922-6611).

Blackhawk Model Railroad Club - Oregon, IL - Conover Square Mall, 2nd Floor, Corner of 3rd & Franklin; Sat 10am-4pm, Sun 1pm-4pm, Wed 12pm-3pm; Free, Donations accepted; Large HO Scale layout, Also trains in Z, N, S, O & G. There is also a Burlington depot under restoration on the BNSF mainline on the south end of town. Oregon is 27 miles south of Rockford, IL, between there & Rochelle, IL; ([www.conoversquare.com](http://www.conoversquare.com)).

Rochelle Railroad Park - Rochelle, IL - 124 N 9th St - Double Diamond of BNSF & UP Railroads, Lots of train action year-round; Shelter w/picnic tables & toilet facilities, Gift Shop, 10am-5pm (Closed Tues), Call ahead for Winter hours (Gift Shop phone: 815-561-1231)([www.rochellerailroadpark.org](http://www.rochellerailroadpark.org)).

The Model Railroad Club of Milwaukee, Inc. - Milwaukee, WI - 215 E National Ave - Under the Canadian Pacific (Soo Line) Tracks, In the former Milwaukee Road West Allis Station, originally built as part of the South Bridge Abutment; Featuring O Scale Model Railroading; Mon (Except the last Mon of each month) 7pm-9pm, Third Fri of every month 7pm-9pm, Last Sun of every month, 1:30pm-4pm.

That's it for this issue.....**All Aboard!**

**Lake States Railway Historical Assn.**  
*Dedicated to professional collections management.*  
**Richard R. Goddard**  
*President*

**BARABOO ARCHIVES**  
 319 Water St., Suite 800  
 Baraboo, WI 53913  
 Phone: 608- 356- 5555  
 Website [www.lsrha.org](http://www.lsrha.org)

LSRHA is a 501c3 non- profit educational corporation.

**THE RAILWAY MODEL BUILDER'S RESOURCE...**

*Our Baraboo Archives collections include over 20,000 C&NW and Omaha original technical drawings 1870's to 1950's. Subjects include steam power, freight & passenger cars as well as structures; many unique to LSRHA. Library includes Official Guides 1878-1979, many employee timetables of western Great Lakes, thousands of photos and books. Descriptive drawing listing collection CD's are now available: Address inquiries to our Email address at: [lakestatesarchive@gmail.com](mailto:lakestatesarchive@gmail.com)*

**SCWD Youth Group News**

Rail School on January 8<sup>th</sup> was a huge success. It was just the ticket to start off the New Year. Thanks go out to Dave and Liam Mullen, Chuck, Joseph and Jeremy Peplinski, Josh and Judy Hegge, and Ryan Lamb for their participation. We all had a great time assisting in the assembly line with Art Dawson. We hope there will be some new members joining our group after they took part in the things we do.

Our next big event is the Mad City Train Show, Feb 18 and 19. We will again have our own booth and layout to run at the show in the traditional location near the entrance to the main exhibit hall by the "Company Store". Those who volunteer to work at the Youth Group Display get free admission to the show. I filled some shifts at Rail School. I do however still need volunteers for the following shifts: Saturday: 3-5 PM; Sunday 11 AM to 1 PM; 1 to 3 PM and 3 to 5 PM. Besides being a really fun event, this Show is our opportunity to let other families know about the Youth Group. We will be distributing membership brochures to potential members and running our layout. Sign up early to get the times you want to volunteer. If you have questions, let me know.

Thanks, Steve Brist  
 608-271-4338 evenings, 608-266-4511 days.



A work of Art (Dawson) Steve Brist Photo

As you can see in the next photo, the testing area was a popular part of the Rail School. Here the new modelers could take their new car out for a spin to check it out under the watchful eyes of some inquiring minds.



Testing the products Steve Brist Photo  
 Steve Brist, Dave Mullen and Chuck Peplinski

⊗  
**::::CALL TO ACTION::::**

Thousands of railcars including both new and historic fallen flags have been vandalized with graffiti over the past decade. Help stop this crime. Report any suspicious trespassing to the railroad or local police.

- NS (800)453-2530
- CSX (800) 232-0144
- UP (888) 877-7267
- BNSF (800) 832-5452
- CN (800) 465-9239
- CP (800) 716-9132
- KCS (877) 527-9464





*ARRIVING JUST IN TIME...*

# STOREWIDE INVENTORY REDUCTION SALE!

- **10% Off** sale prices with this ad
- Recently discounted *specials*
- Phone Orders welcome
- Some items in *limited* supply
- Ad Discount expires 2/11/12 (3 pm)

And, as always, we will continue to offer **10% off** msrp on all N & HO scale products.  
Check us out either in person, by phone, or via the internet.

## *A Plus Trains*

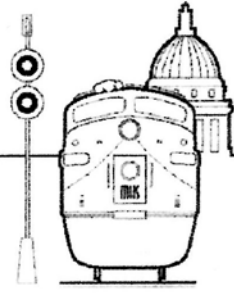
**Exclusively Trains!**

130 Main Street – Elroy, WI 53929 – 608-462-8720

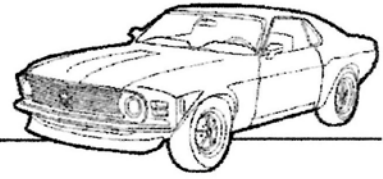
Most major credit cards accepted – will ship at purchaser's expense

Hours: Mon. – Fri. 9 am – 5:30 pm, Sat. 9 am – 3 pm

Web site: [www.aplustrains.com](http://www.aplustrains.com) Email: [trains@aplustrains.com](mailto:trains@aplustrains.com)



# MADISON HOBBY STOP



6622 Mineral Point Road, Madison, WI 53705

phone: 608.829.3820 • fax: 608.829.3842 • www.madisonhobbystop.com

Hours: Monday - Friday (10am - 8pm) and Saturday (10am - 5pm)

Model Railroading • Plastic Model Kits • Rockets & Accessories • Pine Car • Paints • Tools and more!

## SPECIALS!

### HAPPY NEW YEAR

to all of our customers

Now that the cold snowy winter is here,

It's time to stay warm indoors running your trains.

Many new items arriving daily to our huge stock of inventory.

Stop by and see us at the Mad City show next month.

**We are open Sunday's 12:00-5:00 for the winter season**

**For all your needs we have the items in stock always.**

**Remember, most model railroad items are  
20% off**

**With a valid NMRA or other club id card**

*Excludes discounted or sale items, magazines, and consignments*

**25% off Athearn, Atlas, Kato, and Life-Like**

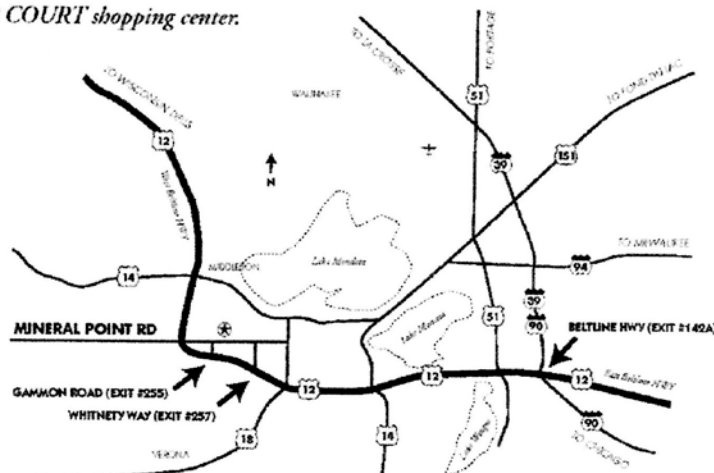
**Pre-Orders**

**Authorized Lionel Dealer**

*Located INSIDE the CLOCK TOWER COURT shopping center.*

**Directions:**

**From points east:** Take I-39/I-90 to exit #142A to East Beltline Highway. Proceed west for 1.2 miles and take Gammon Road exit #255 north to Mineral Point Road. Take a right on Mineral Point Road and then left on Grand Canyon Road, then turn right into the Clock Tower Court Shopping Center. Distance from I-39/I-90 exit #142A to Gammon Road exit #255 via Beltline Highway is 11.8 miles. **From points west:** Take the west Beltline Highway east to Gammon Road exit #255. Take Gammon Road north to Mineral Point Road. Take a right on Mineral Point road and then left on Grand Canyon Road, then turn right into the Clock Tower Court Shopping Center.



Photography  
by

**Sean  
Lamb**

- Completed layouts
- Portraits
- In-progress models
- Any scale/gauge

Call for a free quote



<http://seanlambphoto.com>  
[sean@seanlambphoto.com](mailto:sean@seanlambphoto.com)  
 608-213-6414

# HOBBY HORSE



RADIO CONTROL • HOBBIES • CURLING SUPPLIES  
DIVISION OF HOBBY HORSE WISCONSIN, INC.

JIM BIRSACH  
President

1769 THIERER ROAD  
MADISON, WI 53704  
[hobbyhorse@hobbyhorse.com](mailto:hobbyhorse@hobbyhorse.com)

(608) 241-3491  
FAX (608) 241-1313  
1 (800) 604-6229

## TRAIN GUYZ LLC

*We can make you model railroad dreams come true.*

2903 Robin Court  
Fitchburg, WI 53711  
608-215-6346  
[Vivion2@tds.net](mailto:Vivion2@tds.net)

*Mike Vivion*

## Advertising rates:

Our advertising rates are pro-rated for our 11 issue printing cycle, starting in September of each year. For more information contact the Bad Order Editor at email [SCWDeditor@charter.net](mailto:SCWDeditor@charter.net).

Full page	\$100/yr
Half page	\$50/yr
Quarter page	\$25/yr
Business card	\$20/yr

### BOD Meeting Minutes

can be found on the SCWD website version of the Bad Order [www.nmra-scwd.org](http://www.nmra-scwd.org).



**ADAIR SHOPS™**  
Weight Upgrade Kits for Contemporary Model Railroad Cars

ADAIR SHOPS Tel: 563-875-7663  
Mail: P.O. Box 344 Fax: 563-875-7365  
Office: 238 Second St. NE  
Dyersville, IA 52040

RITE WEY™ THIN WEIGHTS | SCALE LOADS | STEEL PLATES & SLABS  
WEIGHT BOND™ NON-TOXIC GLUE | HAZCODE N BODY PUTTY

Howard Samarin  
Cell phone: 562-884-1040  
E-mail: [howard@yousq.net](mailto:howard@yousq.net)

You can be an  
engineer on the

*Southern Wisconsin  
Sandhouse Crew*



HO scale modular layout  
visit the club website:

<http://www.webng.com/sandhousecrew/>

## The Hobby Depot

**Brian Stackpole**

owner



835-17th Street  
Monroe, Wisconsin 53566

Phone: 608-325-5107

Fax: 608-325-5130

email: [hobbydpo@tds.net](mailto:hobbydpo@tds.net)

**TRAINS & MORE**

**South Central Wisconsin Division of the  
National Model Railroad Association**

Publishes eleven issues yearly of the

**BAD ORDER**

Official Mailing Address:

BAD ORDER

6187 Sun Valley Pkwy

Oregon, WI 53575

Photos in the Bad Order, unless otherwise noted,  
are by Paul Mangan

**Deadline for submissions:** 15th of the month prior  
to publication, unless otherwise noted.

**Midwest Region News:**



**The Illinois Valley Division of the NMRA** will be hosting the 2012 Midwest Region Convention and the annual meeting of MWR region members on March 8 to 11, 2012 at the Abraham Lincoln Hotel in downtown Springfield, Illinois.

Register today at [www.railsplitter2012.org](http://www.railsplitter2012.org). You'll be treated to clinics by W. Allen McClelland, Tony Koester, Andy Sperandeo, Mike Brestel and more.

The Springfield Model Railroad Club's Train Fair is on Sunday March 11<sup>th</sup>. So join us in Springfield for the Railsplitter 2012 Mid-West Region convention.

**Time is moving fast!** March will be here before you know it. There are some SCWD members already signed up and going to the Railsplitter 2012 and we are looking forward to a real good time. If you thought about attending this MWR convention then don't delay. You can register on line at the link above and you're good to go.



**NMRA News**  
*Go to Page 13*

**Help Wanted:**

**Attention:** At the December 4<sup>th</sup> SCWD meet it was announced that after a long run of volunteering, Barb Rothwell will no longer be running the company store at our annual train show. I know I speak for every one in the Division when I say thanks to her for the great job she has done over the years. This is a very important position as all show staff positions are and needs to be filled. If you like meeting people and putting in some great volunteer time this could be just what you are looking for

Please contact Art Dawson and or Mike Vivion about further details. Their info is in the Red Book.

**Announcing SCWD's Spring Outing**

This year the SCWD's Spring outing will be a one-day trip planned for Saturday, May 5<sup>th</sup> which will include a visit to the Illinois Railway Museum at Union IL, a stop for lunch, followed by a visit to the Huntley IL Model Railroad Club and two nearby HO layouts. The IRM will be running electric cars and diesel trains plus have their extensive collection of all types of railway power and cars on display. The Huntley Club has N, HO and hi-rail O layouts as well as an outdoor garden layout. We'll complete the day visiting two moderate-sized, well-scened HO home layouts and return to Madison by dinner time. Participation in this outing is limited to the first 30 people who sign up.

The estimated final cost is about \$50. The first 30 people who sign up and pay a \$25 deposit will get their reservation for this fun day. So bring your deposit to our February 5<sup>th</sup> meeting to insure you get a seat on the bus. There will be more details available at that meeting.

**John Haverberg**  
Trip Coordinator





N and HO Gauge Trains and Accessories  
Tools and Hobby Supplies  
Train and Hobby Books  
Come check out our N and HO Layout

**THE LAST SQUARE**

**HOBBY DEPOT**

5944 Odana Rd - Madison, WI. 53719 - 608-278-4401

Hours  
Sun: 12-5  
M-F: 10-8  
Sat: 10-6

would know any different to which our member (politely) replied “well, I would”!

So as Tom Eckstein watched as the final spike was driven he immediately sent this message to President Lincoln. **IT IS DONE.**

And now you know the real story behind the Golden Spike.

Thanks for sharing this wonderful piece of Errata Data Tom. This is what the file is all about. If you have something to share, send it on in. I'm in the Red Book.

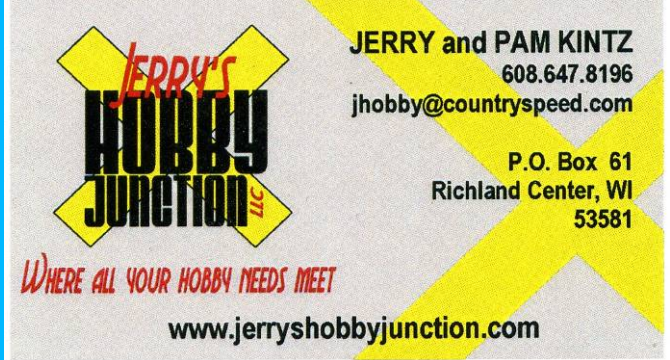
Paul



### From the files of Errata Data:

The Errata Data file is a file of let's just say; things that may be a bit unusual or a little out of the ordinary but still interesting.

Here is new edition to my Errata Data file. The story line goes like this. A prominent member of the SCWD was attending the Union Pacific Historical Society Convention in Ogden Utah in 2004. One of the side trips he had planned took him Promontory Utah to visit the area where the transcontinental railroad connected East and West in 1869.



**JERRY'S HOBBY JUNCTION LLC**

WHERE ALL YOUR HOBBY NEEDS MEET

**JERRY and PAM KINTZ**  
608.647.8196  
jhobby@countriespeed.com

P.O. Box 61  
Richland Center, WI  
53581

[www.jerryshobbyjunction.com](http://www.jerryshobbyjunction.com)

### In the Station:

It's only the end of January I know  
But I'm tired of hearing the cold wind blow.  
The signs of change are beginning to flow for  
What lies ahead is the Mad City Train show.

I know the phrases are getting old  
But so am I, that's what I've been told.  
So Sign up, Jump in Volunteer some time  
And at the end of the day we'll have cheese  
and Wine.

Speaking of volunteering, John Haverberg has stepped up to organize our spring outing this year. See the initial description on the previous page and then come to the meeting on February 5<sup>th</sup> to hear more about it. This appears as if it will be a day of fun and fellowship for us. Space will be limited so sign up A.S.A.P.

Paul



Photo from Unknown Source

A re-enactment was scheduled to take place and while a crew was setting up for the re-enactment our brave member asked the Ranger if they needed a telegrapher. The Ranger said they could use one. Our member then volunteered to do the job but didn't want to steal the show from the gal who was set up to do it. She said she wasn't a telegrapher that she only tapped on the keys but no one in the crowd

## PLEASE PATRONIZE OUR AREA HOBBY STORES

Hobby Horse – 1769 Thierer Road – Near East Town, Madison WI  
 The Hobby Depot – 835 17<sup>th</sup> Street – Monroe WI  
*A Plus Trains* – 130 Main Street – Elroy WI  
 The Last Square Hobby Depot – 5944 Odana Road- Madison WI \*  
 Madison Hobby Stop – 6622 Mineral Point Rd (inside Clock Tower) – Madison WI \*  
 Kornely's Craft & Hobby Center – 130 Front St. (Bus. 151/Hwy. 33) – Beaver Dam WI  
 Larry & Phyl's Hobbies – 500 North Parker Drive – Janesville WI \*  
 Jerry's Hobby Junction – Richland Center, WI

\* = Train Show Ticket advance sales

2012 Meeting Time Table				
Regular Meeting		Train Show Staff	BOD	Youth Group
Feb	5 <sup>th</sup> 2012	Feb 6 <sup>th</sup> 2012	Feb. 13 <sup>th</sup> 2012	Feb 19 <sup>th</sup> (train show)
Mar	4 <sup>th</sup> 2012		Mar 12 <sup>th</sup> 2012	Mar 18 <sup>th</sup> 2012
April	1 <sup>st</sup> 2012		April 9 <sup>th</sup> 2012	April 15 <sup>th</sup> 2012
May	6 <sup>th</sup> 2012	Oct 1 <sup>st</sup> 2012	May 14 <sup>th</sup> 2012	May 20 <sup>th</sup> 2012



### Committee Reports:

Committee reports were presented by Vivion and others. The highlights were as follows.

### Bad Order:

Deadline this month is the 14<sup>th</sup>.

### Club Liaison:

The seasonal Garden Scale activities at Olbrich Gardens and Rotary Gardens are underway.

### Clinics:

Tentative schedule:

- January – Rail School
- February
  - Backgrounds from photos
  - Video
  - 50<sup>th</sup> anniversary of SCWD
- March
  - Testors Airbrush and weathering powders
- April
  - Modeling prototype layouts
  - Rail fanning in LaCrosse area
- May
  - Amtrack anniversary
  - Static grass

### Minutes SCWD Board Meeting

7:00 pm, December 12, 2011  
Fitchburg Firehouse

Board Members Present: Mike Vivion, Paul Mangan, Alan Paine, Charles Karpelenia, Phil Hottman, Steve Lanphear, and Bob McGeever.

Meeting Called to Order at 7:00 pm by Vivion.

### Minutes:

The minutes of the November 14<sup>th</sup> meeting were reviewed. Motion by Mangan, 2<sup>nd</sup> by Lanphear, to approve the minutes as presented. Motion carried unanimously.

### Paymaster Report:

The Paymaster report for November was reviewed. Motion by Mangan, 2<sup>nd</sup> by Lanphear, to approve the report as presented. Motion carried unanimously.

### **Layout Tours:**

Next tour is after February meeting. It will be Ron Halverson's layout.

### **Rail School:**

We will advertise in the local paper this year. Flyers are going fast this year.

### **Rail Show:**

Volunteer sign up continues. Still need a few more people for Sunday. The train sets came in under budget.

### **Youth Group:**

The group will visit Olbrich Gardens Garden Scale show this month.

### **Old Business:**

Projector Bulb: On order.

### **Adams County 2012 Show:**

We will not directly participate but will continue to refer them to groups who might be more appropriate for the show.

### **Spring Division Trip:**

We have a tentative volunteer to lead the trip. It will probably be a day trip on May 5<sup>th</sup>. Details to follow.

### **Youth Group & Rail School:**

Motion by Mangan, 2<sup>nd</sup> by Lanphear, to approve the purchase of 50 copies of the 1<sup>st</sup> edition of Trains for Kids for \$185 plus S&H. They will be given away to youth attendees at the Rail School. Motion carried unanimously.

Because of the high demand, we will reprint the Rail School flyer.

### **New Business:**

After review of some current donations to the Company Store and the Club, it was agreed that the board should develop a policy on donations to be sure all donations are compatible with the clubs status as a 501c3 organization.

Motion by Mangan, 2<sup>nd</sup> by Karpelena, to adjourn. Motion carried unanimously.

Meeting adjourned.

Minutes by Chief Clerk McGeever.



## NMRA News

### **It's a new year and a new InfoNet News eblast!**

- The Kalmbach Library's immensely popular "[The Postwar Freight Car Fleet](#)" book has sold out.
- The [Grand Rails 2012 Convention still has some space left for modular layouts](#) at the National Train Show so if someone in your Division or Region wants to show the world what they've done, contact Tom Draper, Chairman of the National Train Show, at either [tcdraider@aol.com](mailto:tcdraider@aol.com), or call 602-953-1681.
- More Grand Rails 2012 news: The convention has some [great things planned for non-rails](#). There's a cooking demo that will make attendees think they're watching a stand-up comedian do a cooking show and great entertainment at the luncheon in one of the most beautiful ballrooms in the country. There's also a ride on a dune schooner to see the 1100 acre Saugatuck Dunes! Have non-rails go to [www.gr2012.org](http://www.gr2012.org) for all the details.

### ***And some of last month's important news bears repeating:***

- This year [registration for Grand Rails 2012 will be handled in a new way](#). Instead of the large registration package inserted into *NMRA Magazine*, the full package can be downloaded from [www.gr2012.org](http://www.gr2012.org). Those who prefer a printed piece can send their request, along with their name and address to: GR 2012 Registrar, 4165 Costa NE, Grand Rapids, MI 49525. There will also be a registration form and ad appearing in an upcoming issue of *NMRA Magazine*.
- [NMRA elections](#). The official ballot was prepared by the National Nominating Committee according to the procedures laid out in the Regulations and the Executive Handbook (available at [www.nmra.org](http://www.nmra.org)). It will appear as an insert in the center of the February issue of *NMRA Magazine*, which

will be mailed to all voting members. Ballots must be returned to NMRA headquarters, "Attention Ballot Committee," and must be postmarked by April 10, 2012 and received by April 15, 2012.

Here are the job titles and candidates as they appear on the ballot:

- President:  
Charles W. Getz, IV, HLM
- Vice President - Administration:  
Howard Goodwin  
Clark Kooning, MMR  
Dave Thornton
- Vice President - Special Projects:  
Bill Kaufman  
James "Lump" Lupfer
- At-Large North American Director  
Mike Brestel  
Miles Hale, MMR
- Eastern District Director  
John Roberts, MMR, HLM
- Pacific District Director  
Mike Bartlett  
Kelly Loyd  
Rob Peterson

*If you have any questions or comments about any of the above, please send them directly to a Director or Officer. You'll find those addresses at [www.nmra.org](http://www.nmra.org) or in NMRA Magazine.*

*And if you're changing email addresses, please let me know at this email address: [NMRA-infonet@earthlink.net](mailto:NMRA-infonet@earthlink.net)*

-Gerry Leone, MMR  
NMRA Communications Director

That's all for this Month.

⊗ ⊗      ⊗ ⊗